

Technical Data

OBSERVE GSI-6 HP

"Millennium" warranty:
- 5 year workmanship and materials warranty.

Improved performance not only in snow and slush, but on ice and cold wet roads as well. How did Toyo Tire accomplish all of this? Traction from advanced technology.

| | SIZE | LOAD RANGE | LI/SR | CODE | | 1/32" | OD | OW | SLR | RPK | RIM WIDTHS | |
|----|-----------|------------|-------|------|--------|-------|----|------|------|------|------------|--------------|
| 16 | 195/55R16 | | 87H | BL | 142760 | | 11 | 24.4 | 7.9 | 11.3 | 529 | 6.0 5.5-7.0 |
| | 205/55R16 | XL | 94H | BL | 142590 | | 11 | 24.9 | 8.5 | 11.5 | 518 | 6.5 5.5-7.5 |
| | 215/55R16 | XL | 97H | BL | 142610 | | 11 | 25.3 | 8.9 | 11.6 | 510 | 7.0 6.0-7.5 |
| | 195/50R16 | | 84H | BL | 142820 | | 11 | 23.7 | 7.9 | 11.0 | 544 | 6.0 5.5-7.0 |
| | 215/55R17 | XL | 98H | BL | 142600 | | 11 | 26.3 | 8.9 | 12.1 | 491 | 7.0 6.0-7.5 |
| 17 | 225/55R17 | | 97H | BL | 142620 | | 11 | 26.7 | 9.2 | 12.3 | 483 | 7.0 6.0-8.0 |
| | 205/50R17 | XL | 93H | BL | 142660 | | 11 | 25.1 | 8.4 | 11.7 | 514 | 6.5 5.5-7.5 |
| | 215/50R17 | XL | 95H | BL | 142670 | | 11 | 25.5 | 8.9 | 11.8 | 506 | 7.0 6.0-7.5 |
| | 225/50R17 | | 94V | BL | 142630 | | 11 | 25.8 | 9.0 | 11.9 | 500 | 7.0 6.0-8.0 |
| | 235/50R17 | | 96V | BL | 142880 | | 11 | 26.3 | 9.6 | 12.1 | 491 | 7.5 6.5-8.5 |
| | 215/45R17 | XL | 91H | BL | 142690 | | 11 | 24.6 | 8.3 | 11.5 | 524 | 7.0 7.0-8.0 |
| | 225/45R17 | XL | 94H | BL | 142640 | | 11 | 25.0 | 8.8 | 11.6 | 517 | 7.5 7.0-8.5 |
| | 235/45R17 | XL | 97H | BL | 142740 | | 11 | 25.4 | 9.3 | 11.8 | 509 | 8.0 7.5-9.0 |
| | 245/45R17 | XL | 99H | BL | 142860 | | 11 | 25.7 | 9.5 | 11.9 | 503 | 8.0 7.5-9.0 |
| | 245/55R18 | | 103V | BL | 142730 | | 11 | 28.6 | 9.9 | 13.1 | 451 | 7.5 7.0-8.5 |
| 18 | 225/50R18 | XL | 99V | BL | 142720 | | 11 | 26.9 | 9.1 | 12.5 | 480 | 7.0 6.0-8.0 |
| | 245/50R18 | XL | 104V | BL | 142780 | | 11 | 27.7 | 9.9 | 12.8 | 466 | 7.5 7.0-8.5 |
| | 225/45R18 | XL | 95V | BL | 142650 | | 11 | 25.9 | 8.8 | 12.1 | 498 | 7.5 7.0-8.5 |
| | 235/45R18 | XL | 98V | BL | 142750 | | 11 | 26.3 | 9.3 | 12.3 | 490 | 8.0 7.5-9.0 |
| | 245/45R18 | XL | 100V | BL | 142710 | | 11 | 26.7 | 9.5 | 12.4 | 484 | 8.0 7.5-9.0 |
| | 225/40R18 | XL | 92V | BL | 142680 | | 11 | 25.1 | 9.0 | 11.8 | 515 | 8.0 7.5-9.0 |
| | 235/40R18 | XL | 95V | BL | 142810 | | 11 | 25.4 | 9.4 | 11.9 | 508 | 8.5 8.0-9.5 |
| | 245/40R18 | XL | 97V | BL | 142700 | | 11 | 25.7 | 9.7 | 12.0 | 502 | 8.5 8.0-9.5 |
| | 255/40R18 | XL | 99V | BL | 142890 | | 11 | 26.0 | 10.2 | 12.1 | 496 | 9.0 8.5-10.0 |
| | 235/45R19 | | 95V | BL | 142840 | | 11 | 27.4 | 9.3 | 12.8 | 472 | 8.0 7.5-9.0 |
| 19 | 245/45R19 | XL | 102V | BL | 142770 | | 11 | 27.7 | 9.5 | 12.9 | 466 | 8.0 7.5-9.0 |
| | 225/40R19 | XL | 93V | BL | 142830 | | 11 | 26.1 | 9.0 | 12.3 | 495 | 8.0 7.5-9.0 |
| | 235/40R19 | XL | 96V | BL | 142850 | | 11 | 26.4 | 9.4 | 12.4 | 489 | 8.5 8.0-9.5 |
| | 245/40R19 | XL | 98V | BL | 142790 | | 11 | 26.7 | 9.7 | 12.5 | 483 | 8.5 8.0-9.5 |
| | 255/40R19 | XL | 100V | BL | 142870 | | 11 | 27.0 | 10.2 | 12.6 | 477 | 9.0 8.5-10.0 |
| | 255/35R19 | XL | 96V | BL | 142800 | | 11 | 26.0 | 10.2 | 12.2 | 496 | 9.0 8.5-10.0 |

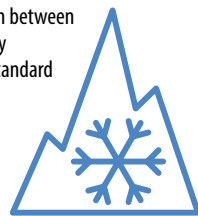
XL - Extra Load

Tire data subject to change. Visit toyotires.ca for current data.

Transport Canada Approved for Severe Winter Conditions

Transport Canada in conjunction with the Rubber Association of Canada and the Tire Manufacturers Association in the U.S.A. have introduced a new performance standard requirement for snow tires. This new standard was developed to help consumers distinguish between an "all season" tire (represented by the symbol "M+S") and tires specifically designed for use in severe winter conditions. Tires now meeting this new standard for true winter tires will display a mountain/snowflake pictograph on the sidewall in addition to the M+S symbol.

TOYO Tire Canada, a market leader in winter tires, advises that its complete line-up of Observe winter tires will display the mountain/snowflake symbol.



TOYO TIRES
driven to perform[®]

OBSERVE[®] GSI-6 HP

A performance tire ready for Canadian winters!





OBSEIVE® **GSI-6 HP**

Studless Performance Winter Tire

The Toyo Observe GSi-6 HP is designed for the toughest winter conditions featuring Microbit studless technology. The high performance rated sizes are ideal for passenger cars, sport coupes and some sport SUVs. Significant performance improvements over its predecessor have been achieved using the latest technology. The result is a tire that performs better in snow and ice, with a significant improvement on cold wet roads.

Features & Benefits



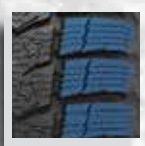
DIRECTIONAL TREAD PATTERN
>> A directional tread design with staggered tread blocks maximizes traction and handling while improving ride comfort by reducing road noise.



SERRATED STABILITY RIB
>> A continuous centre rib adds stability during highway driving or when changing lanes.
>> A unique serrated design digs into deep snow and slush for better cold weather traction.



LARGE PAIRED INNER BLOCKS
>> Larger inner blocks are tied together to add stability at highway speeds.
>> While the saw-tooth edges around the block add biting grip in deep snow and slush covered roads.



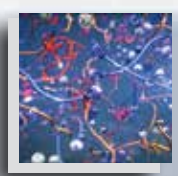
SPLIT OFFSET SHOULDER BLOCKS
>> Large outer blocks on the outside shoulder add stability to the tire as well as grabbing power in deep snow.
>> The saw-tooth edges add lateral traction while cornering.



SNOW CLAWS
>> These edges within the tread grooves enhance traction in deep snow or slush.

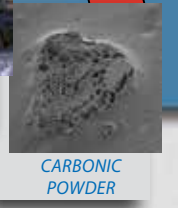


SILICA & HIGH GRIP POLYMER



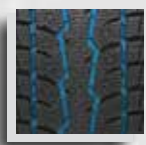
ADVANCED COMPOUNDING

High levels of silica along with a new high grip polymer blended in the rubber compound keeps the tire pliable during colder temperatures while also improving wet weather traction. Microbit Technology further improves grip on any slippery surface.

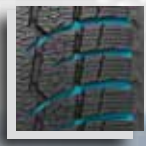


MICROBIT TECHNOLOGY

4 CIRCUMFERENTIAL GROOVES
>> 4 circumferential grooves efficiently evacuate moisture from under the tire for better grip.



TAPERED EVACUATION GROOVES
>> Tapered evacuation grooves quickly move the water or slush away from the center of the tire to reduce the risk of hydroplaning or getting caught in slushy rutted roads..



HIGH DENSITY 3D SIPES
>> Toyo's Multi Wave 3D siping provides for more edge effect while ensuring the blocks remain firmer while braking, cornering or accelerating. This improves performance and reduces the risk of irregular wear.



PLOW EDGE
>> A sharp angled leading edge adds edge grip on snow and ice and helps move slush away from the center of the tire.



SHOULDER LIGHTNING EDGE
>> A jagged lightning style sipe in the shoulder blocks adds lateral traction when cornering.



TAPERED SHOULDER WEDGE
>> A tapered buttress design along with unique outside block grooves on the sidewall adds to the tires ability to navigate slushy rutted roads.



SPIRAL EDGE SIPE

>> A unique 360 degree spiral edge sipe is designed to improve traction while accelerating, cornering or braking.

