

Technical Data

Designed to withstand severe service commercial applications delivering a comfortable ride comparable to that of a traditional all-terrain tire.

“Millennium” warranty:
- 5 year workmanship and materials warranty.



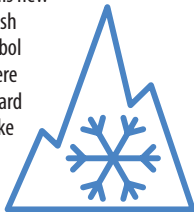
Stud - TSMI #15

OPEN COUNTRY C/T												
SIZE / DIMENSION		CODE		PLY	1/32"	OD	OW	SLR	RPK	RIM WIDTHS		
				PLI		DHT	LHT	RSCS	RV	LARGEURS DE JANTES		
LT245/75R16	120Q	BW	345050		10-E	18	30.7	9.8	13.7	420	7.0	6.5-8.0
LT235/80R17	120Q	BW	345090		10-E	18	32.0	9.3	14.4	403	6.5	6.0-7.5
LT245/75R17	121Q	BW	345030		10-E	18	31.7	9.8	14.2	407	7.0	6.5-7.5
LT245/70R17	119Q	BW	345070		10-E	18	30.8	9.8	13.9	419	7.0	6.5-8.0
LT265/70R17	121Q	BW	345010		10-E	18	31.9	10.7	14.3	405	8.0	7.0-8.5
LT285/70R17	121Q	BW	345000		10-E	18	33.0	11.5	14.7	391	8.5	7.5-9.0
35x12.50R17LT	121Q	BW	345120		10-E	19	34.8	12.5	15.4	371	10.0	8.5-11.0
LT265/70R18	124Q	BW	345060		10-E	18	32.9	10.7	14.8	393	8.0	7.0-9.0
LT275/70R18	125Q	BW	345020		10-E	18	33.4	11.0	15.0	386	8.0	7.0-8.5
LT275/65R18	123Q	BW	345040		10-E	18	32.3	11.0	14.6	399	8.0	7.5-9.0
35x12.50R18LT	123Q	BW	345130		10-E	19	34.8	12.5	15.5	371	10.0	8.5-11.0
LT275/65R20	126Q	BW	345080		10-E	18	34.3	11.0	15.6	376	8.0	7.5-9.5
LT265/60R20	121Q	BW	345110		10-E	18	32.8	10.7	15.0	394	8.0	7.5-9.5
LT275/55R20	115Q	BW	345100		8-D	18	32.1	11.2	14.7	402	8.5	7.5-9.5
LT285/55R20	122Q	BW	345150		10-E	18	32.6	11.7	14.9	396	9.0	8.0-10.0
35x12.50R20LT	121Q	BW	345140		10-E	19	34.8	12.5	15.8	371	10.0	8.5-11.0

Tire data subject to change. Visit toyotires.ca for current data.

Transport Canada Approved for Severe Winter Conditions

Transport Canada in conjunction with the Rubber Association of Canada and the Rubber Manufacturers Association in the U.S.A. have introduced a new performance standard requirement for snow tires. This new standard was developed to help consumers distinguish between an “all season” tire (represented by the symbol “M+S”) and tires specifically designed for use in severe winter conditions. Tires now meeting this new standard for true winter tires will display a mountain/snowflake pictograph on the sidewall in addition to the M+S symbol.



TOYO Tire Canada, a market leader in winter tires, advises that its complete line-up of Observe winter tires will display the mountain/snowflake symbol.



OPEN COUNTRY® C/T
Heavy duty all-terrain traction!





▶ **OPEN COUNTRY® C/T**

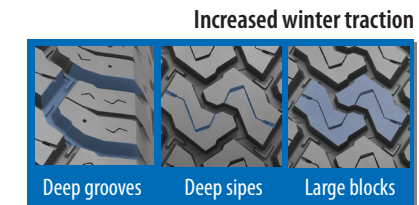
All Terrain, All Weather Light Truck Tire

The Toyo Open Country C/T light truck tire is designed for on-off road winter driving conditions, combining winter performance with commercial durability and traction. The Open Country C/T delivers optimum traction in all off-road conditions including dirt, gravel, mud and snow, while providing a quiet, comfortable highway ride.

The tire features a brand new compound that balances cut/chip resistance with improved winter performance. This was achieved without sacrificing durability, tread life and wet/dry handling, while delivering a quiet, comfortable ride that you would not expect from a all-terrain light truck tire.

Advanced heavy duty construction!

An aggressive tread design offers increased traction in mud, dirt or even snow!



Features & Benefits



CUT AND CHIP RESISTANCE COMPOUNDING

>> The natural rubber blend resists cutting, chipping and stone drilling while remaining flexible in cold temperatures for enhanced grip and traction in extreme winter conditions.



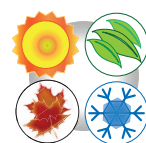
AGGRESSIVE SIDEWALL AND BUTTRESS

>> For tough looks and even tougher performance in dirt, mud or snow.



DUAL-ANGLE SHOULDER BLOCKS

>> Designed to enhance traction in snow, mud and rutted road conditions.



all-weather



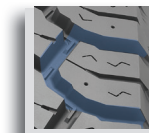
EXTRA TUFF 3-PLY HIGH TURN-UP CONSTRUCTION

>> Exceptional bruise resistance construction for superior traction and steering response with increased stability and durability.



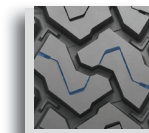
OPEN SHOULDER GROOVES

>> Helps propel the vehicle through mud, slush and snow.



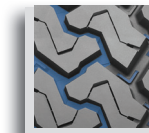
DEEP SIPES

>> Open notches and deep sipes work together for enhanced wet and snow traction.



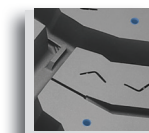
DEEP GROOVES AND STONE EJECTORS

>> Elevated stone ejectors are optimally positioned throughout the tread grooves to dislodge stones that may penetrate the tread.



PINNED FOR STUDS

>> Pinned for (#15) studs for optimal snow and ice traction.



TOYO TIRES